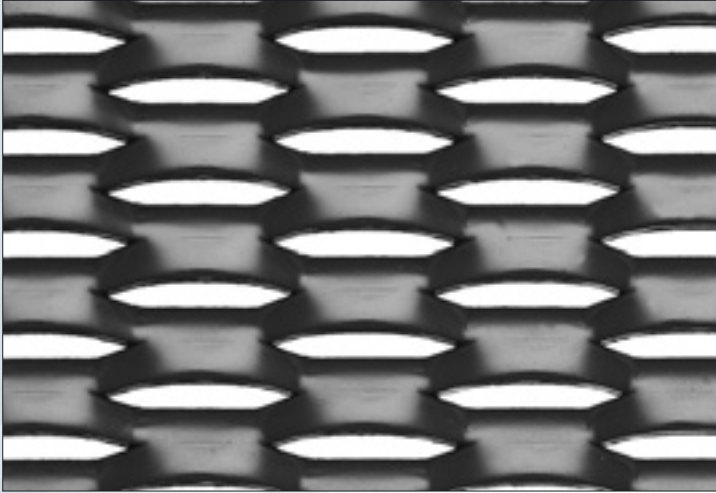


• Expanded - ribbed grating

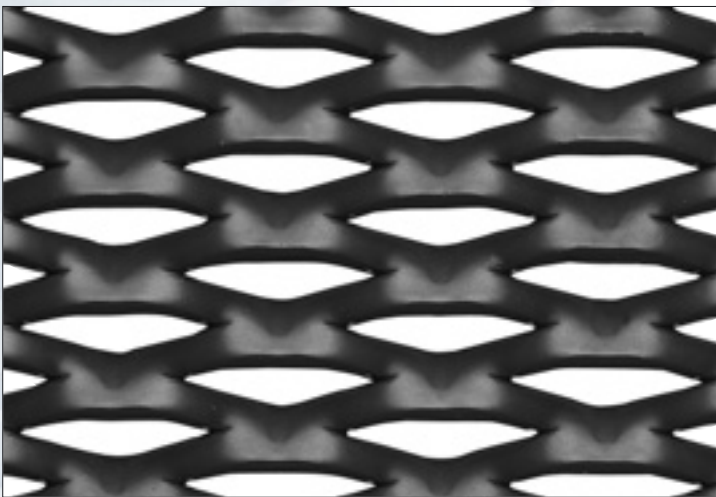
Mesh dimensions (1:1)



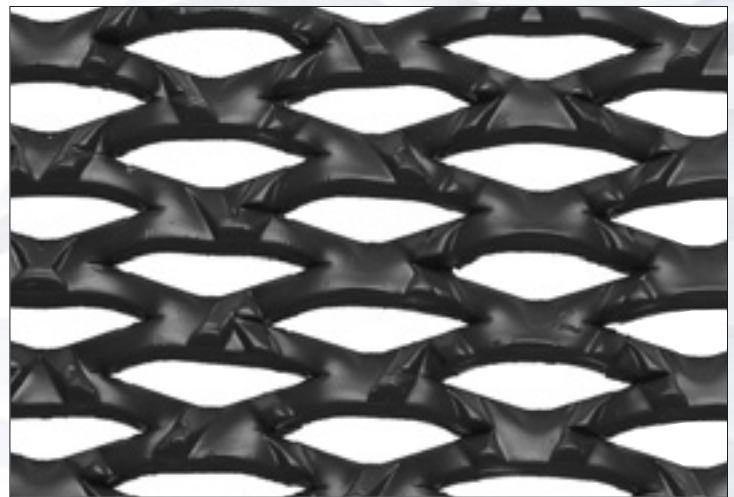
Types Fils 20 - Fils 21 - Fils 22



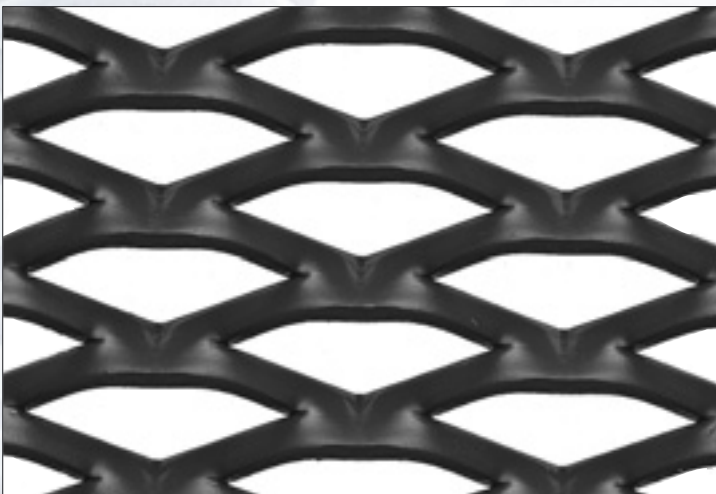
Type Fils 21 Ⓢ



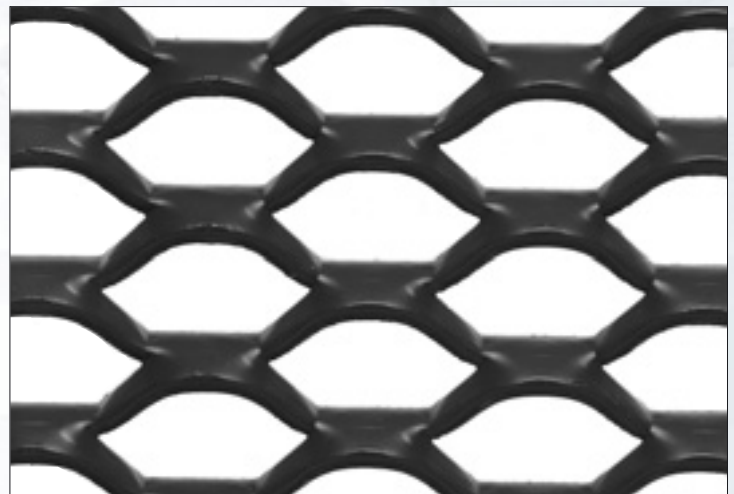
Types Fils 15 - Fils 16



Type Fils 15 Ⓢ



Type P 02



Types E 3 - E 4

Expanded and ribbed gratings

Thanks to their shape, some grating

types are antipanic non slip, high-heel safe and act as a flame/smoke break.

Type	DL x DC mm	Actual DL x DC mm	Strand width av/mm	Thickness sp/mm	Weight kg/m ²	DL width mm	DC length mm
Fils 20	45 x 15	45 x 11.4	3.3	3	13.8	1000	2000
Fils 21	45 x 15	45 x 13.4	5	3	17.5	1000 1250 1500	2000 2500 3000
Fils 22	45 x 15	45 x 13.4	5	4	24	1000	2000
Fils 15	43 x 17	43 x 14	5	3	17	1000	2000
Fils 16	43 x 17	43 x 14	5	4	23	made to order	made to order
P 02	53.5 x 20	53,8 x 18	5	3	13	1000 1500	2000 3000
Fils 21 (S)	45 x 15	45 x 13.4	5	3	21.5	1000	2000
Fils 15 (S)	43 x 17	43 x 14	5	3	21	made to order	made to order
E 3	45 x 18	45 x 19.5	4.5	3	11	1000 1250 1500	2000 2500 3000
E 4	45 x 18	45 x 19.5	4.5	4	14	1000 1250	2000 2500

Sheet sizes available

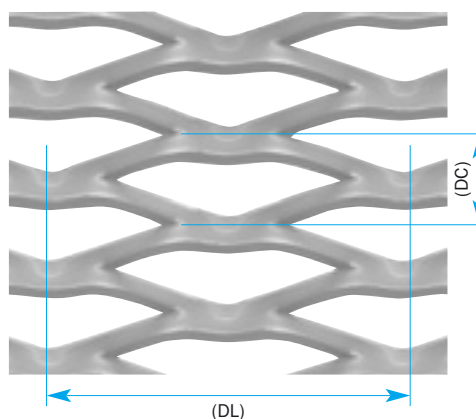
(S) = Ribbed

The weights given in the table are indicative and refer to steel grating

The highlighted data are for the mesh in the photos.

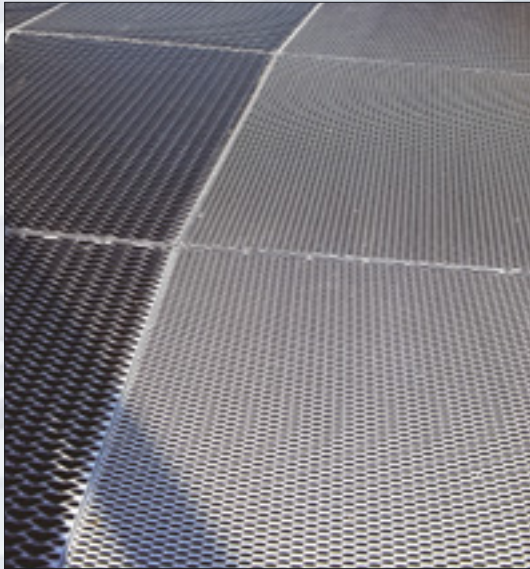
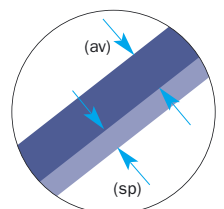
All gratings are expanded from carbon steel. On request some of the meshes can be processed from pre-galvanized steel, aluminium, copper, brass and stainless.

Some of the grating types can be processed also from thickness 1.5 - 2 and 2.5 mm.



Mesh dimensions

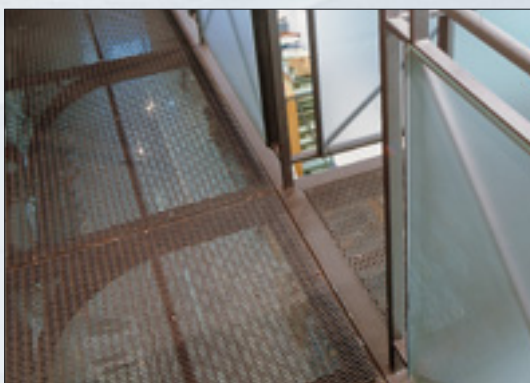
- DL = LW - long way
- DC = SW - short way
- av = w - strand width
- sp = t - thickness



1



2



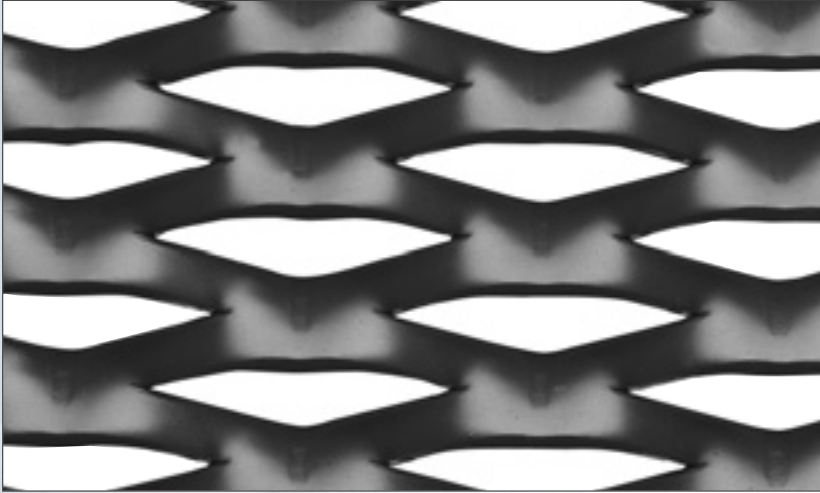
3

1 - FILS 6 - DL 90 x DC 30 (22.3) - av 7.5 x sp 4 mm
Fils 20 - DL 45 x DC 15 (11.4) - av 3.3 x sp 3 mm
Hot dip galvanised steel

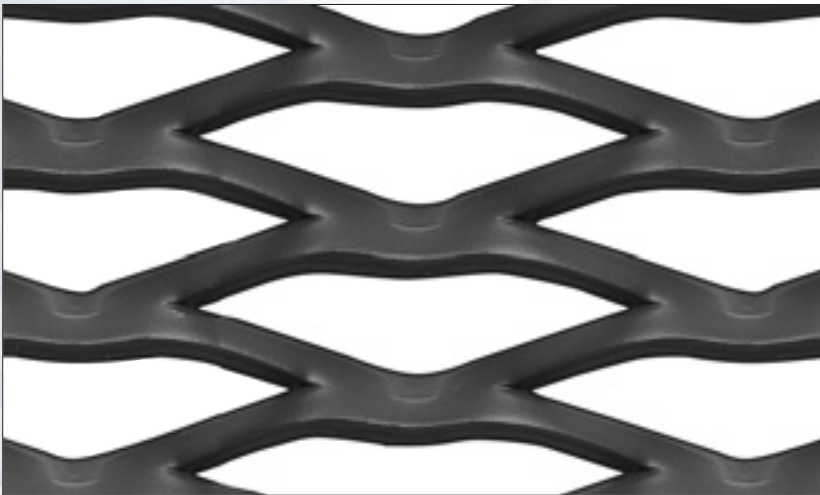
2/3 - FILS 20 - DL 45 x DC 15 (11.4) - av 3.3 x sp 3 mm
Hot dip galvanised steel

• Expanded gratings

Mesh dimensions (1:1)



Types Fils 4 - Fils 5



Types Fils 6 - Fils 7 - Fils 8



Types Fils 1 - Fils 2 - Fils 3

All gratings are expanded from carbon steel. On request some of the meshes can be processed from pre-galvanized steel, aluminium, copper, brass and stainless.

Some of the gratings types can be processed also from thickness 1.5 - 2 and 2.5 mm.

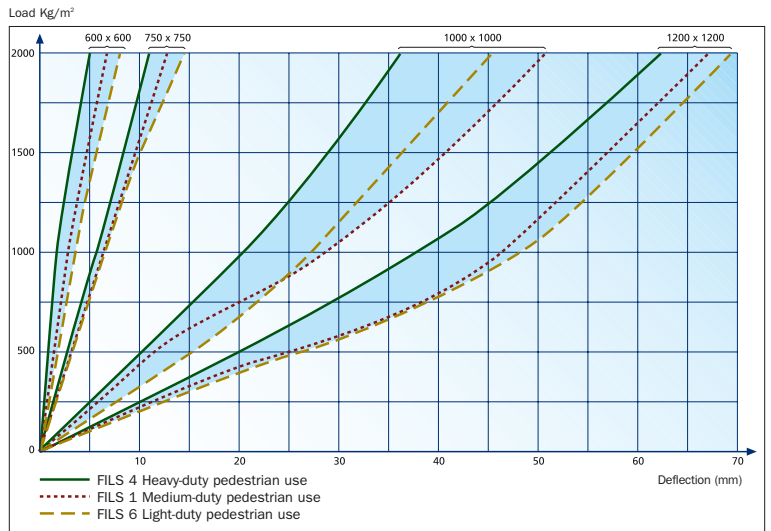
Type	DL x DC mm	Actual DL x DC mm	Strand width av/mm	Thickness sp/mm	Weight kg/m ²	DL width mm	DC length mm
------	------------	-------------------	--------------------	-----------------	--------------------------	-------------	--------------

Fils 4	62.5 x 20	62.5 x 20	7.5	4	23	1000 1250	2000 2500
Fils 5	62.5 x 20	62.5 x 20	7.5	3	18	1000 1250 1500	2000 2500 3000

Fils 6	90 x 30	90 x 22.3	7.5	4	21	1000	2000
Fils 7	90 x 30	90 x 22.3	8.3	4	23	made to order	made to order
Fils 8	90 x 30	90 x 22.3	7.2	5	25	made to order	made to order

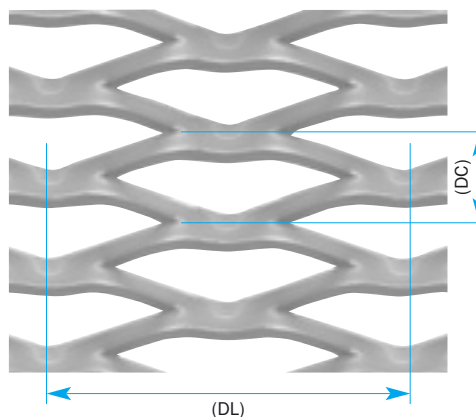
Fils 1	110 x 40	110 x 25.4	7	4	17	1000 1250 1500	2000 2500 3000
Fils 2	110 x 40	110 x 25.4	8	4	19.5	1000	2000
Fils 3	110 x 40	110 x 25.4	7	5	22	1000	2000

The highlighted data are for the mesh in the photos. The weights given in the table are indicative and refer to steel grating



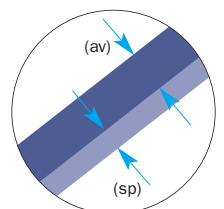
Load test

The data shown in the graph refer to the laying of frameless gratings fixed by welding to the support beams on either side of the walkway. The self-supporting grating panels are edged and framed with sections proportional to the expected load.



Mesh dimensions

DL = LW - long way
DC = SW - short way
av = w - strand width
sp = t - thickness



FILS 20 - DL 45 x DC 15 (11.4) - av 3.3 x sp 2 mm
 AISI 304 steel



COLISEUM - DL 200 x DC 75 (80) - av 24 x sp 2 mm
 Aluminium